

# FAIRHAVEN PROMENADE, LANCASHIRE



This is a narrow site, sandwiched between the Ribble and Alt estuaries and an historic Lakeside Park (Fairhaven lake). We capitalised on the beautiful setting with a simple and elegant design response, to deliver a vital defence for a vulnerable community regarding its climate resilience.

Our design provides a robust defence but in the form of a spectacular linear public realm, which can host cycling, walking and healthy activity, to perfectly complement the unique sense of place. 6 months ahead of programme and under the project budget this sinuous new promenade and stepped revetment replaced a crumbling piece of infrastructure dating back to the 1890's and provides spectacular views across the estuary. Despite the growing effects of climate change the community of Fairhaven can now look forward with confidence and residents and visitors of all mobilities can enjoy this unique space.

## KEY FACTS

A 2.5km estuarine coastal protection project protecting nearly 2,500 properties and businesses within a vulnerable landscape setting.

Delivered as part of joint venture VBA (VolkerStevin, Boskalis Westminster and Atkins).

The scheme was funded by the Environment Agency as part of a Shoreline Management Plan to protect headlands in the North West and Wales.

LOCATION:	Fairhaven Promenade, Lancashire
CLIENT:	Environment Agency
START DATE:	January 2017
END DATE:	July 2020
CONTRACT VALUE:	£21.8m



Promenade steps



"What we see along the shoreline today is beyond my wildest dreams."

Councillor Thomas Threlfall  
Representative for the Fairhaven  
and Church Scar Sea Defence Project

ARCHITECT OF THE YEAR  
PUBLIC REALM

# CARDIFF CANAL QUARTER, WALES



Our innovative proposals for a key part of Cardiff's emerging Canal quarter will spectacularly reveal a hidden canal which currently lies beneath a street and its associated parking bays, converting an ordinary streetscape into a waterside haven containing lush planting and events spaces, to deliver a unique and vibrant space at the heart of the city.

LOCATION:	Cardiff Canal Quarter, Wales
CLIENT:	Cardiff City Council
START DATE:	2018
END DATE:	Ongoing
CONTRACT VALUE:	Undisclosed

Our design will create a new landmark public space which celebrates and reimagines a long-forgotten part of the city's maritime history, which has lain covered for decades. Located in Cardiff city centre, The Canal Quarter will enhance the dock-feeder canal with a variety of sustainable interventions.

A series of bio-retention gardens and water features will capture rainfall and ensure that runoff is cleaned, controlled and reused. A cantilevered stage and terraced amphitheatre will host key cultural events throughout the year and the revealed watercourse will have a series of edges with access for all to appreciate and enjoy.

Broadleaf tree planting, as well as a bespoke steel pergola with climbing plants, will also provide dappled shade, helping to fight urban heat island effects and delivering pollution management, biodiversity and a more natural city centre space. The scheme is expected to open to the public next year.



Site section showing stage area

## KEY FACTS

RIBA stages 1-4.

60m of the canal will be revealed to convert a city centre streetscape into a vibrant waterside public space.

A series of bio-retention gardens and water features will capture rainfall.

A cantilevered stage and terraced amphitheatre will host key cultural events throughout the year.



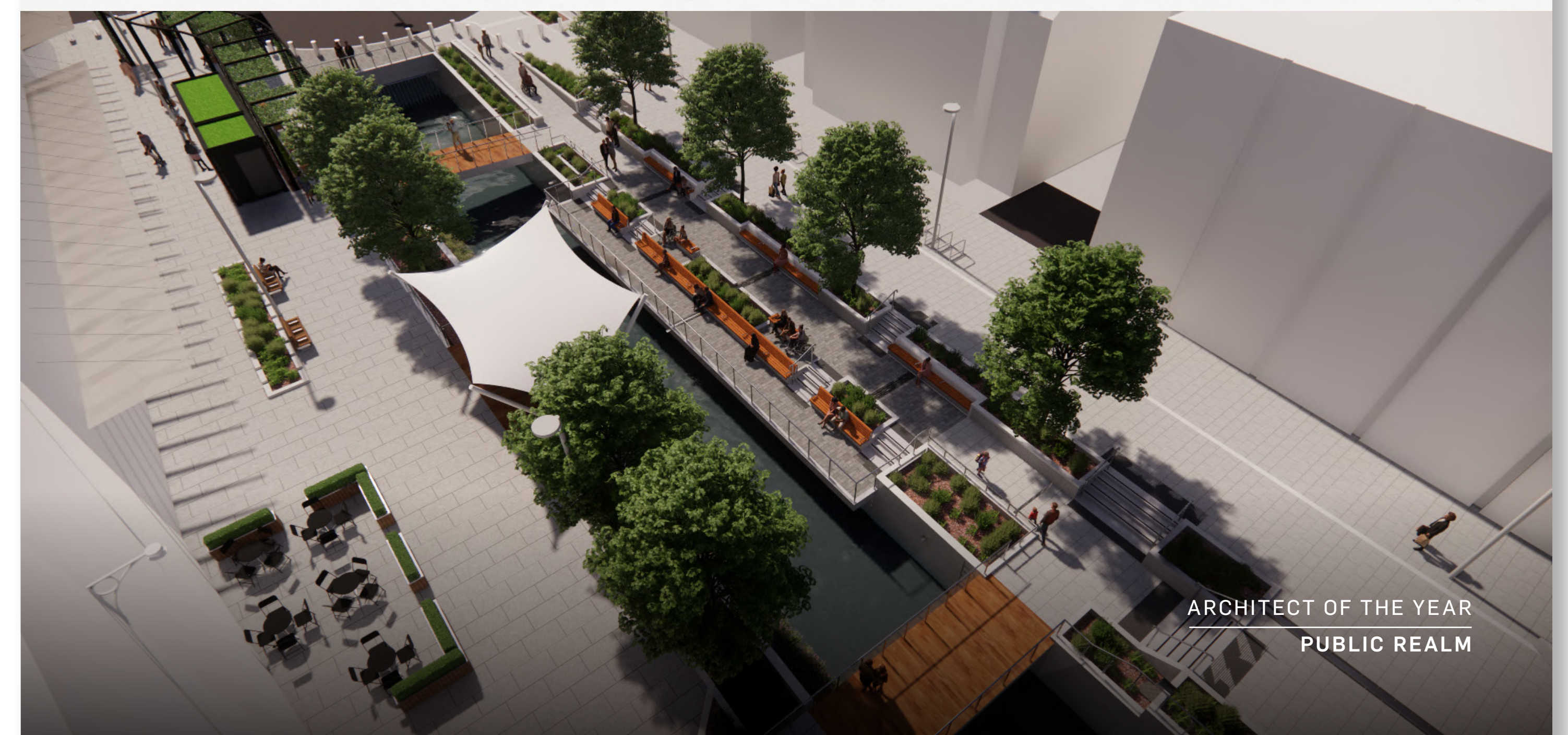
Night time stage view

"Such an exciting project...  
Atkins are doing a fantastic job."

Cardiff Council



Plan view



ARCHITECT OF THE YEAR  
PUBLIC REALM



# EDINBURGH STREET DESIGN GUIDANCE - DETAILED DESIGN MANUAL



The Edinburgh Street Design Guidance (ESDG) and associated Detailed Design Manual is the first and only evidence-based piece of comprehensive street design guidance in Scotland and second of its kind in the UK.

LOCATION:	Edinburgh, Scotland
CLIENT:	City of Edinburgh Council
START DATE:	November 2015
END DATE:	Ongoing

This supplementary planning document is a practical go-to guide for street design and presents technical guidance, details and design solutions that set a high bench-mark for street design, treating streets as places and actively prioritising sustainable travel. The objective of the Guidance is to shift the emphasis of street design from movement to place and deliver a world-class network of vibrant, safe, attractive, effective and enjoyable streets in Edinburgh that take cognisance of its World Heritage Site status.

Atkins worked collaboratively with the Active Travel team in Edinburgh Council to deliver the detailed design manual which comprises technical documents called 'factsheets' on a range of topics including pedestrian environment, landscape and public realm,

cycling, public transport and street geometry and layout. This required extensive working with various council departments to challenge longstanding design approaches and traditional thinking to develop innovative design approaches that sensitively balanced multiple user needs to achieve positive results.

The success of this Guidance lies in its implementation and since its publication the principles and design details prescribed in the Factsheets have influenced the designs of some of the most significant public realm projects in Edinburgh. This has resulted in some radical changes to street layouts to substantially reduce car traffic, prioritise pedestrian and cycle movement and promote creation of place.



Design guidance factsheets



CCWEL Section 3 - York Place: implementing the Edinburgh Street Design Guidance Principles

"The Edinburgh Street Design Guidance is an exemplary piece of work that sets a high benchmark for street design in Edinburgh by setting out standards and requirements that will help to make streets places for people by giving greater emphasis to walking, cycling and public transport."

**Sarah Feldman**  
Active Travel Officer, City of Edinburgh Council



ARCHITECT OF THE YEAR  
PUBLIC REALM

# QINGDAO JIAODONG INTERNATIONAL AIRPORT, SHANDONG PROVINCE, CHINA

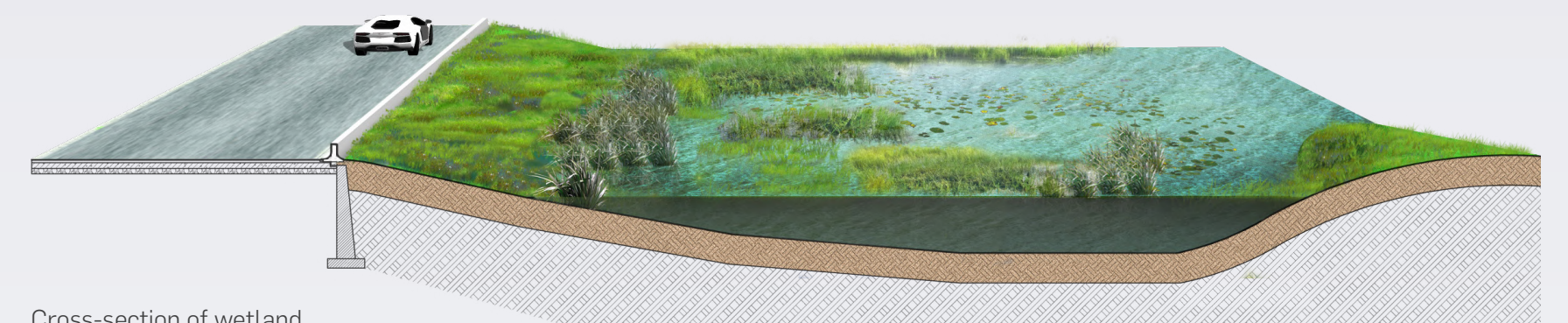


Qingdao Jiaodong International Airport is located 24 miles from this coastal city in the Shandong province of north east China between Beijing to the north and Shanghai to the south. It represents the perfect integration of landscape architecture and infrastructure through interdisciplinary collaboration.

LOCATION:	Qingdao, Shandong Province, China
CLIENT:	Qingdao Airport Group
START DATE:	2013
END DATE:	2021
CONTRACT VALUE:	£1.2m

This huge site spans over 3,000 hectares - twice the size of London's Heathrow Airport catering for 35 million passengers annually. The scale of the site and design ambition is huge and the airport has been dubbed "Sponge Airport" due to its innovative approach and emphasis on green water treatment systems having been designed to absorb and store excess rainwater that can be recycled and reused when needed to help reduce the risk of flooding.

The landscape design also creates "sea waves" of landform to echo the "starfish" form of the terminal building. This "sea wave" topography not only reflects the local culture, but also helps to integrate the ecology, underground utilities and transportation elements which are wrapped in belts of extensive planting helping to integrate this huge development into the landscape in a sympathetic manner.



Cross-section of wetland



Ground level view of wetland



Central garden view



ARCHITECT OF THE YEAR  
PUBLIC REALM